



## Plow Towers

### Unique Design

The WPM Plow Tower has been uniquely designed to support the ease of operation and flexibility demanded by today's finishing operations. Built on 1" solid steel side frames with full base plates, the WPM Plow Tower is built to last. The many features built-in to a WPM plow are designed to address the key elements of any finishing operation—*make-ready, performance and ease-of-operation.*

### Standard Features

- Running radial adjustment of plow.
- Running remote sidelay adjustment.
- Hardened steel infeed rolls for slitting or perforating.
- Exclusive WPM 360 degree rotary plow.
- Individually controlled air loaded slitter and trolley assemblies.
- Set-up reference scale for quick adjustments of plow.
- Three axis adjustments of plow modules for fast make-ready.
- Modular plow head design allows total flexibility of multi-level plow towers.
- Hard, black anodized, low inertia, web lead rollers for long life and superior performance.
- Compact design for significantly lower space requirements.

### Expandability

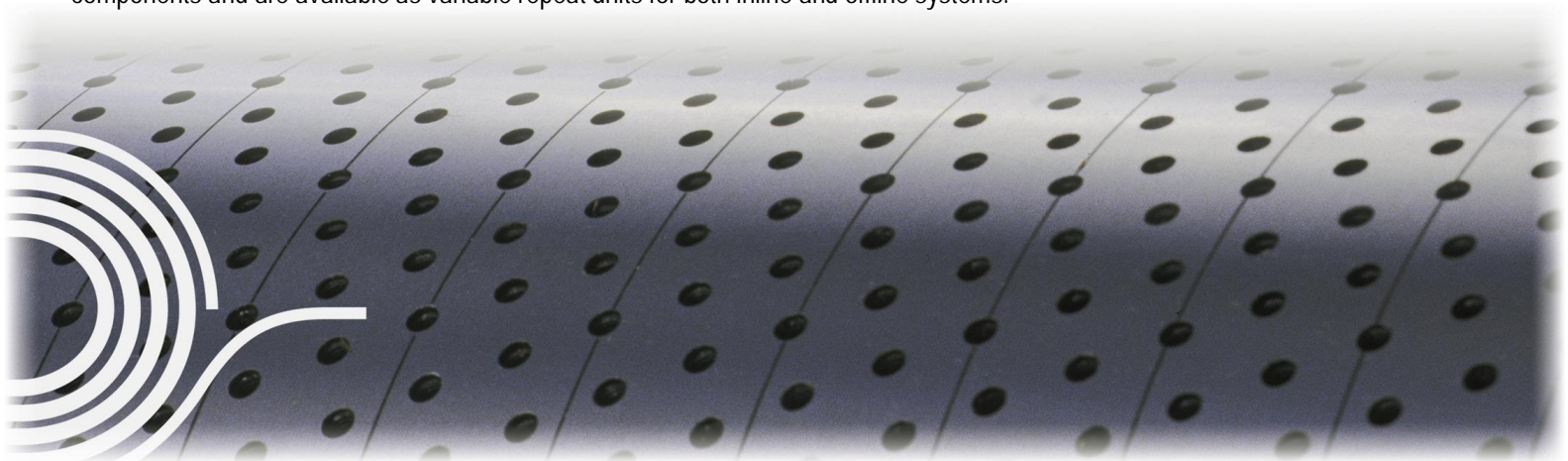
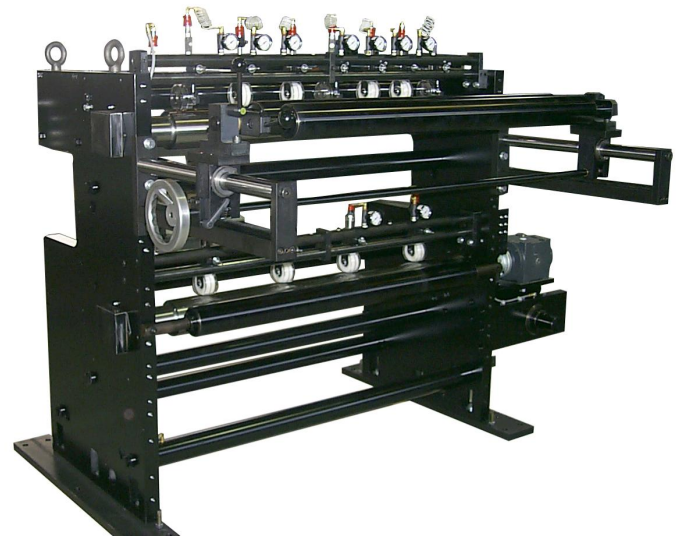
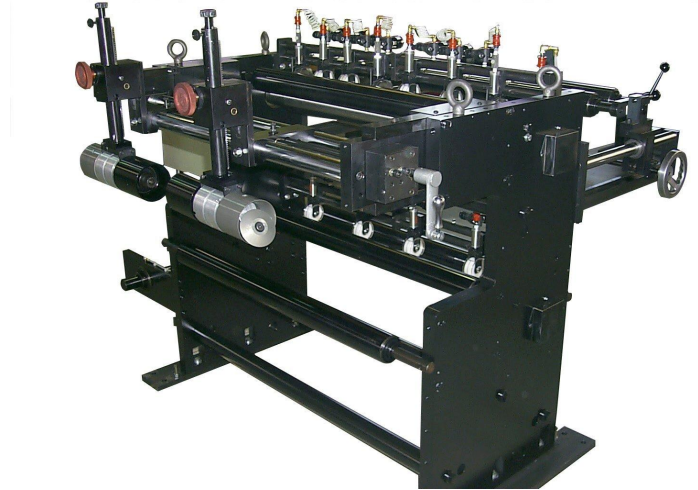
To further support our customers' ability to expand their operations, all WPM Plow Towers are designed to accept future WPM components such as lower level or 3rd level folding stations, a WPM FlexGluer™ or the WPM Closed-End Product System.

### Plow Tower Options

- Motorization of plow module sidelay adjustment.
- 3rd or 4th stream capability for added versatility.
- Lower level or 3rd level folding station for single stream capability.
- Three roll driven by-pass with two nip trolleys per roller.

### Versatility

WPM Plow Towers can be designed as independently driven (shaftless) components and are available as variable repeat units for both inline and offline systems.





## Plow Towers

### Specifications

Available in 26" (660mm) and  
38" (965mm) Web Widths  
Traveling Fold Creaser Assembly

### Weights (Approximate)

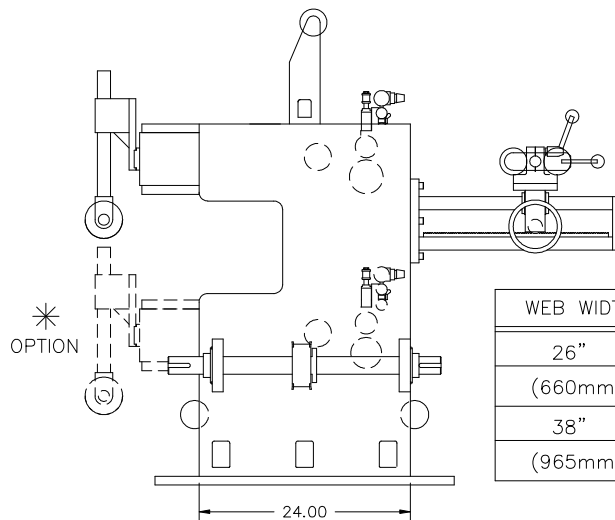
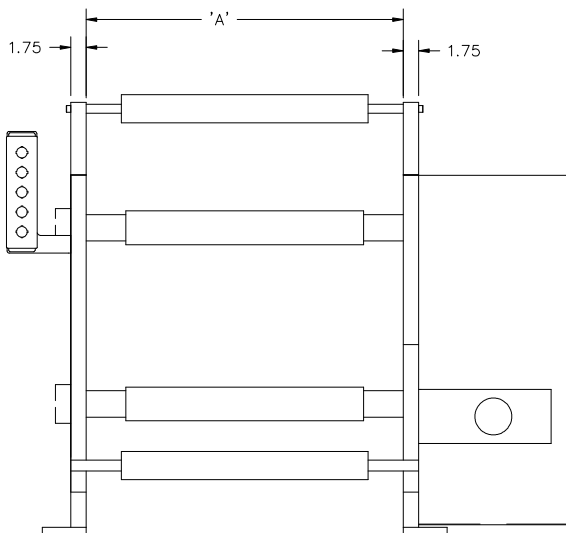
26" (660mm) Web Width      4,000 lbs (1,814 kg)  
38" (965mm) Web Width      4,500 lbs (2,041 kg)

### Utilities Requirements

Air:                      High Pressure – Volume-Minimal  
                                 Pressure – (80-100 PSIG)  
                                 (5.5 to 6.8 Bars)

### Equipment Options

Motorization of plow module sidelay adjustment  
Lower driven roller for by-pass  
Lower plow folding level\*  
Upper 3<sup>rd</sup> level plow folding



WEB WIDTH	A
26"	36"
(660mm)	(914mm)
38"	48"
(965mm)	(1219mm)

## Western Printing Machinery Company Finishing Technology Division

WPM, the WPM Logo, WPM Europe, the WPM Europe logo, TruCut, Tru-Cut, TruCut AdvantEdge, Tru-Cut AdvantEdge, TruLock, Tru-Lock, TruImage, MicroTouch, Micro-Touch, RotaCutter, Rota-Cutter, ServoRotaCutter, ServoSealer, DieCutter, FlexDieCutter, FastTrack, FlexGluer, SlimGluer, AngleBar, Gilda, the Gilda logo, KnifeLocator, and Excellence In Finishing are Trademarks or Registered Trademarks of Western Printing Machinery Company. All other brand and product names are Trademarks or Registered Trademarks of their respective companies or organizations.

Corporate Offices  
9229 Ivanhoe Street  
Schiller Park, Illinois 60176-2348 USA  
Main (847) 678-1740 • Fax (847) 678-6176

Cutting Technology Division  
9228 Ivanhoe Street  
Schiller Park, Illinois 60176-2306 USA

WPM Europe Limited  
Units 1 & 2 Sam Brown Industrial Estate  
Dog & Gun Lane, Whetstone  
Leicester LE8 6LJ United Kingdom

[www.wpm.com](http://www.wpm.com)