



RemoistGluer™

RemoistGluer/Coater™

Quality by Design

The WPM RemoistGluer and RemoistGluer/Coater have been designed to exceed the expectations of today's high-speed finishers. Built on 1" base plate, solid steel side frames and cross supports at the bottom, middle and top the WPM RemoistGluer is the most durable gluer/coater in the industry. When the unit is not in use, a full 1 1/2" gap is created to allow for easy passage of the web. To maintain exacting register control, every RemoistGluer is designed around an oil lubricated internal gear drive. Control of the unit is executed at the unit or remotely at the press console. The WPM RemoistGluer and Gluer/Coater have been designed to focus on the key elements of any printing operation—make-ready, performance, and ease of operation.

Standard Features

- Topside or bottomside configuration.
- Motorized 360-degree circumferential register.
- Motorized sidelay +/- 1/4". Internal gear-drive for long life.
- Choice of scribed or traditional plate cylinder.
- Pneumatically controlled throw off to allow for web passage.
- Exclusive WPM pan roller dual eccentric design permits skewing for precise control of glue thickness across the width of the transfer cylinder.
- Sunday Drive allows the metering section to operate while the unit is idle.
- Variable speed metering roller.
- Single position air clutch for easy engagement of the unit.
- Exclusive WPM glue skiving system—virtually eliminates glue slinging, spitting and costly clean up of flying glue.
- No wrenches are required for on the run adjustments.
- Central grease manifold for easy maintenance.

Versatility

All WPM RemoistGluers are available with an independent shaft-lock vector drive (shaftless) or standard drive shaft connection.

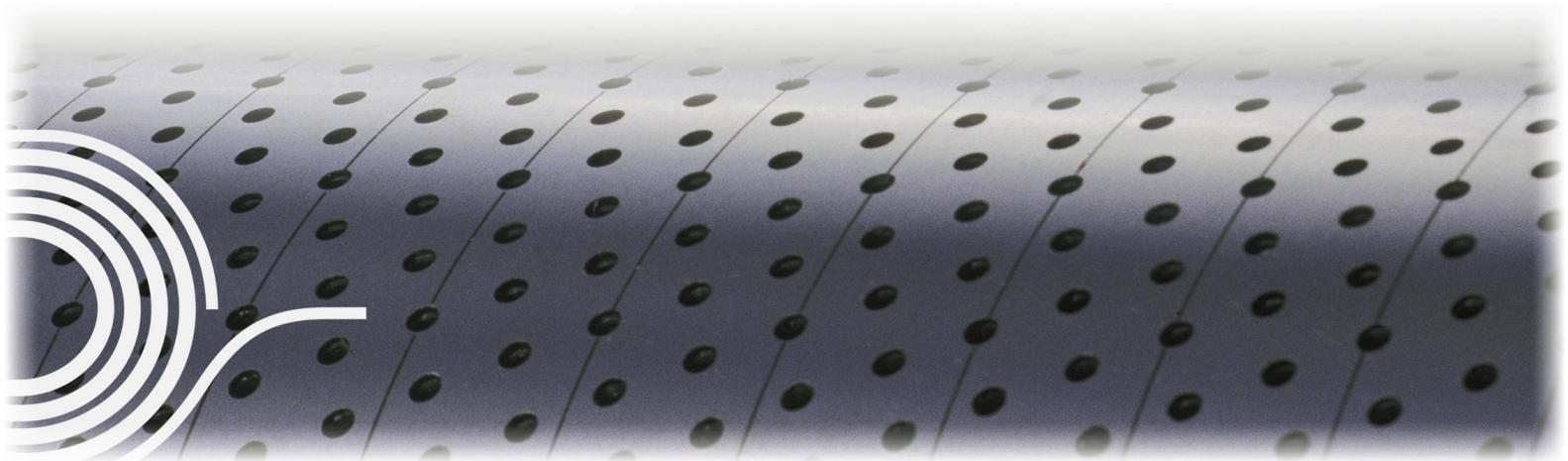
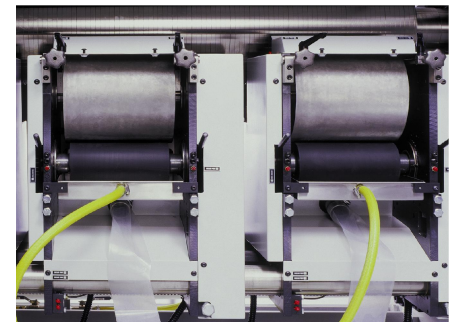


Additional Gluer/Coater Features

- Engraved, water-cooled anilox cylinder.
- Full width reverse doctor blade arrangement for precise material application.
- Capable of applying UV or aqueous coatings, metallic or fluorescent inks, fragrances, scratch-offs and remoistenable glue.

RemoistGluer - Gluer/Coater Options

- WPM material transfer and cooling system.
- Segmented pan rollers to allow for multiple application of different substances.
- Stacked configuration available for two web applications.
- Automatic cutoff control.





RemoistGluer™ RemoistGluer/Coater™

Specifications

Available in 26" (660mm) and 38" (965mm) Web Widths
 Glue application on Top OR Bottom side of web
 Scribed plate cylinder

Weights (Approximate)

26" (660mm) Web Width 5,500 lbs (2,495 kg)
 38" (965mm) Web Width 7,000 lbs (3,176 kg)

Utilities Requirements

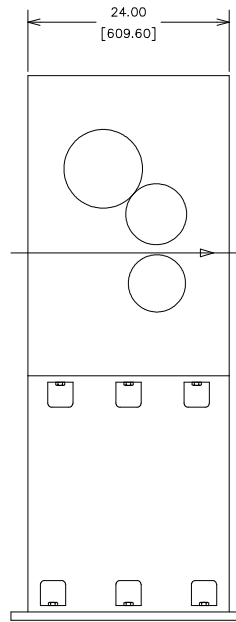
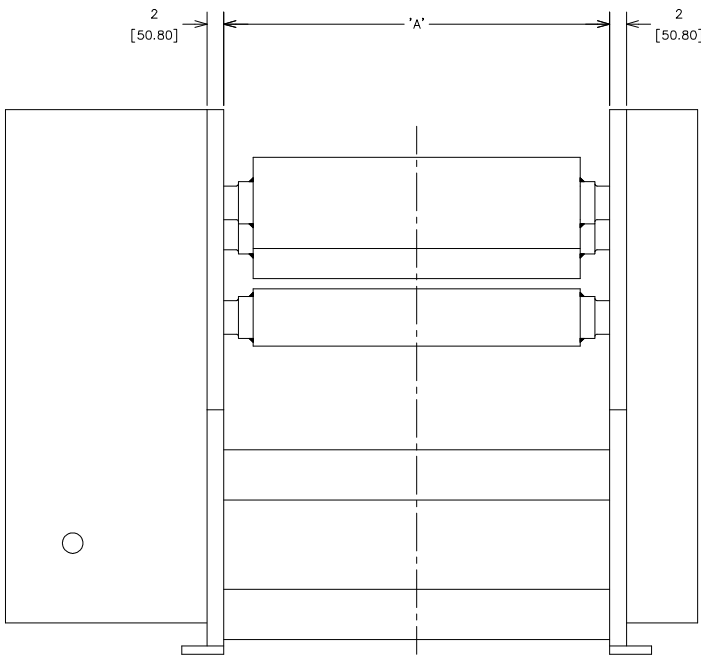
Power: 115/230 VAC, 1 Phase, 50/60 Hz

Air: High Pressure – Volume-.75 liters/sec
 During impression off/on
 (80-100 PSIG) (5.5 to 6.8 Bars)

Cooling Water: Volume- 5 GPM (19 Liters/Min)
 Temperature: 60°F (15°C)

Equipment Options

Glue Transport System
 Glue tank viscosity controls



WEB WIDTH	A
26"	35"
(660mm)	(889mm)
38"	46"
(965mm)	(1168mm)

**Western Printing Machinery Company
 Finishing Technology Division**

Corporate Offices
 9229 Ivanhoe Street
 Schiller Park, Illinois 60176-2348 USA
 Main (847) 678-1740 • Fax (847) 678-6176

Cutting Technology Division
 9228 Ivanhoe Street
 Schiller Park, Illinois 60176-2306 USA

WPM Europe Limited
 Units 1 & 2 Sam Brown Industrial Estate
 Dog & Gun Lane, Whetstone
 Leicester LE8 6LJ United Kingdom

www.wpm.com

WPM, the WPM Logo, WPM Europe, the WPM Europe logo, TruCut, Tru-Cut, TruCut AdvantEdge, Tru-Cut AdvantEdge, TruLock, Tru-Lock, TruImage, MicroTouch, Micro-Touch, RotaCutter, Rota-Cutter, ServoRotaCutter, ServoSealer, DieCutter, FlexDieCutter, FastTrack, FlexGluer, SlimGluer, AngleBar, Gilda, the Gilda logo, KnifeLocator, and Excellence In Finishing are Trademarks or Registered Trademarks of Western Printing Machinery Company. All other brand and product names are Trademarks or Registered Trademarks of their respective companies or organizations.