

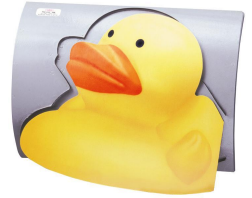


RotaCutter™ 2000

Quality by Design

WPM took the standard by which all other rotary cutters are measured, and we made it even better! The attention to every detail important to today's fast paced market has been carefully engineered into the design with only one goal in mind... deliver value.

Quite simply, the RotaCutter 2000 does things no other rotary cutter can do. WPM has integrated exclusive features like our ultra high speed make-ready drive, one touch job set-up and precision driven tension controls into the cutter that has always provided the widest range of finished products including contour cuts... perfs...jagged cuts...curves...all from our exclusive four knife system.



The only rotary cutter with contour capability.

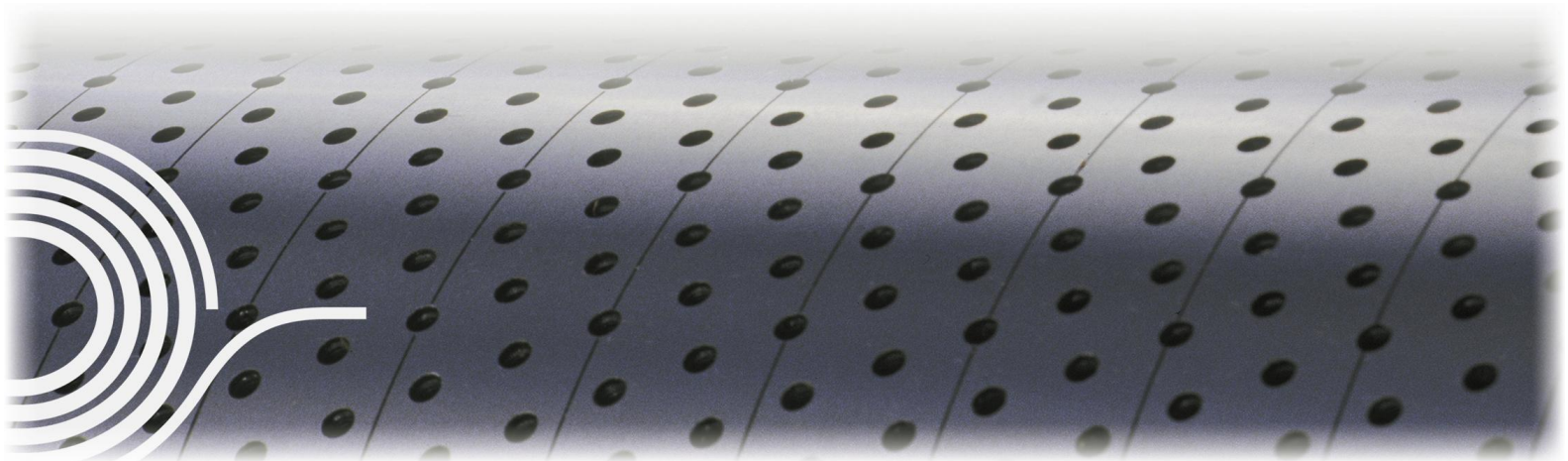
Standard Features

- Computerized knife positioning utilizing a PLC touch-screen control with integrated WPM KnifeLocator™ software.
- Ultra high speed knife location utilizing an Indramat high resolution servo.
- Variable driven infeed roller with independently driven upper nips to control web/ribbon tension.
- Exclusive WPM "Four Knife System" providing unmatched versatility of cutting technology.
- On-the-run MicroTouch™ knife adjustment for precise (.0001") control of knife wear.
- New AdvantEdge™ light weight spacers, totally eliminates rubbering.
- New design RFC2000™ Tape Delivery system on Easy-Glide bearings for fast positioning.
- Transition wheels phased electronically to match product size... zero make-ready.
- Torque sensing jam detection of all delivery functions with auto retiming and repositioning.
- "Product guide" for production of small sized jobs.



Customer Care Support – Worldwide

With manufacturing and support centers in the U.S. and UK, WPM provides unparalleled support 24 hours a day, worldwide. WPM has been delivering value to the finishing business for over 70 years and our professional service and training staff are experienced in all areas of the printing, finishing and converting markets.





RotaCutter™2000

Specifications

Available in 26" (660mm) and 38" (965mm) Web Widths
 Minimum Product Length: 4" (101.60mm)
 Maximum Product Length: 24-5/16" (617.52mm)
 Minimum Gap Chip: 1/4" (6.35mm)
 Mechanical Speed Rating: 2,000 FPM
 Knife Cylinder Undercut: 5/8" (15.90mm)
 Optional Table Extension

Weights (Approximate)

Rotary Cutter – 26" Web Width 10,000 lbs (4,536 kg)
 Rotary Cutter – 38" Web Width 15,000 lbs (6,804 kg)
 Delivery Table – 26" Web Width 4,500 lbs (2,042 kg)
 Delivery Table – 38" Web Width 5,000 lbs (2,268 kg)

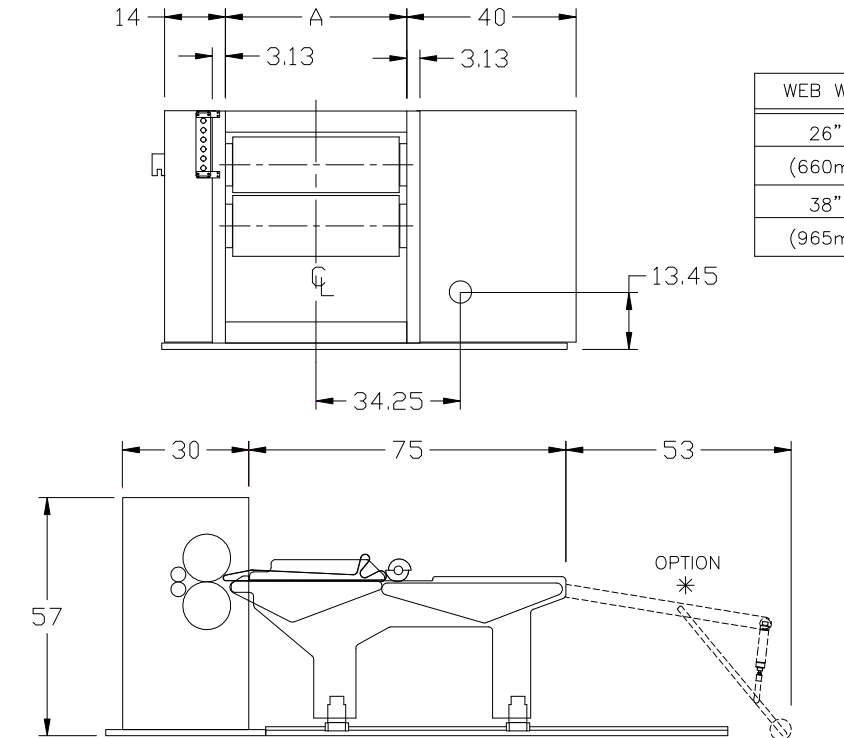
Utilities Requirements

Power: 400-460 VAC, 3 Phase, 50/60 Hz

Air: High Pressure – Volume-Minimal
 Pressure – (80-100 PSIG)
 (5.5 to 6.8 Bars)

Vacuum: 9" Pipe (228.60mm)
 2430 Cubic Ft/Min
 (69 Cubic Meters/Min)

Cooling Water: Volume- 5 GPM (19 Liters/Min)
 Temperature: 60°F (15°C)
 @ oil pump heat exchanger



Western Printing Machinery Company Finishing Technology Division

Corporate Offices
 9229 Ivanhoe Street
 Schiller Park, Illinois 60176-2348 USA
 Main (847) 678-1740 • Fax (847) 678-6176

Cutting Technology Division
 9228 Ivanhoe Street
 Schiller Park, Illinois 60176-2306 USA

WPM Europe Limited
 Units 1 & 2 Sam Brown Industrial Estate
 Dog & Gun Lane, Whetstone
 Leicester LE8 6LJ United Kingdom

www.wpm.com

WPM, the WPM Logo, WPM Europe, the WPM Europe logo, TruCut, Tru-Cut, TruCut AdvantEdge, Tru-Cut AdvantEdge, TruLock, Tru-Lock, TruImage, MicroTouch, Micro-Touch, RotaCutter, Rota-Cutter, ServoRotaCutter, ServoSealer, DieCutter, FlexDieCutter, FastTrack, FlexGluer, SlimGluer, AngleBar, Gilda, the Gilda logo, KnifeLocator, and Excellence In Finishing are Trademarks or Registered Trademarks of Western Printing Machinery Company. All other brand and product names are Trademarks or Registered Trademarks of their respective companies or organizations.